

本製品は日本国法に基づき製造販売されたものです。また、この添付文書は日本国法に基づき作成した添付文書を翻訳したものであり、日本国外の法規に準じているわけではありません。

This product is manufactured and marketed for domestic sales in accordance with the Japanese laws. This leaflet, translated from the original package insert created in accordance with Japanese laws, is not in compliance with laws outside Japan.

3rd Class OTC drug

Please read the package insert carefully before use and keep it with this medicine.

Health drugs
containing vitamins

キューピーコーワゴールドαプラス

Q&P KOWA GOLD α-PLUS

Precautions for use

What to ask a doctor, pharmacist or registered salesperson

① Ask a doctor, pharmacist or registered salesperson before use if you:

Have ever had allergic reaction to any medicines, etc.

② The following symptoms, occurred due to this medicine, may be observed as adverse reactions. If any of the symptoms occur after use, stop use immediately and ask a doctor, pharmacist or registered salesperson with the package insert.

Related area	Symptoms
Skins	Rash/redness, itching
Digestive organs	Nausea/vomiting

③ The following symptom may occur after use; in case the symptom persists or worsens, stop use and ask a doctor, pharmacist or registered salesperson with the package insert.

Diarrhea

④ If symptoms do not improve after using for some time, stop use and ask a doctor, pharmacist or registered salesperson with the package insert.

Indications

Nutritional fortification, weak constitution, and nutrition supply in the following cases: physical exhaustion, loss of physical strength after illness, loss of appetite, nutrition disorder, febrile debilitating illness, and during pregnancy or lactation, etc.

Dosage/directions

Take the tablet with room temperature or warm water.

Age	One dose	Daily dose
Adults (15 years and older)	1 tablet ○	Once to twice
Children (Under 15 years of age)	✗ Do not use.	

● You can take the medicine at any time of the day in the morning, daytime, and evening, regardless of before or after a meal.

(When you take the medicine twice daily, it is recommended that the second dose is taken at least 6 hours after the first dose.)

<Precautions for dosage/directions>

Follow the dosage/directions.

Ingredients/contents (in 2 tablets)

Ingredients/contents	
Japanese angelica extract powder (100mg as Japanese angelica)	25.0mg
Siberian ginseng extract powder (350mg as Siberian ginseng)	14.0mg
Astragalus root extract powder (240mg as Astragalus root)	30.0mg
Oxoamidine powder	50.0mg
L-arginine hydrochloride	50.0mg
Thiamine nitrate (V.B ₁)	10.0mg
Riboflavin (V.B ₂)	4.0mg
Pyridoxine hydrochloride (V.B ₆)	10.0mg
Tocopherol calcium succinate [20mg as <i>dl</i> - α -tocopherol succinate (V.E)]	20.7mg
Sodium L-ascorbate [100mg as L-ascorbic acid (V.C)]	112.6mg
Anhydrous caffeine	50.0mg

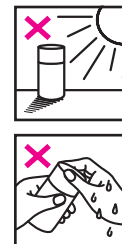
[Inactive ingredients] Hydroxypropyl cellulose, cellulose, crospovidone, magnesium stearate, hypromellose, sucrose, ethyl acrylate/methyl methacrylate copolymer, polyoxyethylene nonylphenyl ether, polyoxyethylene polyoxypropylene glycol, talc, gum arabic, calcium carbonate, gelatin, dibasic sodium phosphate, titanium oxide, yellow No. 5, carnauba wax

<Precautions for ingredients/contents>

Urine may turn yellow due to Vitamin B₂ (riboflavin).

Precautions for storage and handling

- ① Store in a cool and dry place avoiding high temperatures, humidity, and direct sunlight, with cap tightly closed.
- ② Keep out of reach of children.
- ③ Do not transfer the product to another container. (It may cause misuse and deterioration in the quality.)
- ④ When tablets get wet with water, the surface of tablets may be discolored or cracked. Therefore, avoid falling water drops on tablets or handling tablets with wet hands. If tablets accidentally become wet, discard the wet tablets.
- ⑤ The cushioning material in the container (plastic film) is for protection of tablets during transportation. Make sure to discard the material once the cap is opened.
- ⑥ If the cap of the container is not closed tightly, the quality may deteriorate due to moisture in the air. Therefore, close the cap tightly after each use.
- ⑦ Tablets may be cracked and their quality may be affected adversely due to external shocks such as being dropped. Therefore, the product should be handled with care by storing it in the box, etc.
- ⑧ Write down the date when the cap is opened in the column on the outer box and on the label.
- ⑨ Do not use this product after its validity date (printed on the outer box and on the label) has expired. For quality maintenance reasons, this product should be used within 6 months once the cap is opened.



Marketing Authorization Holder: Kowa Company, Ltd.
3-4-14 Nihonbashi-Honcho, Chuo-ku, Tokyo

Y1070R K8K