

本製品は日本国法に基づき製造販売されたものです。また、この添付文書は日本国法に基づき作成した外箱を翻訳したものであり、日本国外の法規に準じているわけではありません。

This product is manufactured and marketed for domestic sales in accordance with the Japanese laws.  
This leaflet, translated from the original outer box created in accordance with Japanese laws, is not in compliance with laws outside Japan.

2nd Class OTC drug

Please read this outer box carefully before use and keep it with this medicine.

Topical anti-inflammatory  
analgesics medicine (patch)

# バンテリン<sup>®</sup>パットEXホット

## VANTELIN KOWA PAD EX HOT

(1 sheet 10cm×14cm)

### Precautions for use

#### To be avoided

(Failure to follow the directions below may worsen existing symptoms or increase the risk of adverse reactions)

**1. Do not use if you:**

- (1) Have had an allergic reaction to this medicine or any of its ingredients.
- (2) Have had asthma.
- (3) Are children under 15 years of age.

**2. Do not use:**

- (1) Around the eyes, mucosa etc.
- (2) Eczema, dermatitis, wound site.
- (3) Affected area of athletic foot/tinea, or of suppuration.

**3. Do not use continuously for more than 2 weeks.**

#### What to ask a doctor, pharmacist or registered salesperson

**1. Ask a doctor, pharmacist or registered salesperson before use if you:**

- (1) Are currently treated by a doctor.
- (2) Are pregnant or may possibly be pregnant.
- (3) Have ever had allergic reaction to any medicines, etc.

**2. The following symptoms, occurred due to this product, may be observed as adverse reactions. If any of the symptoms occur after use, stop use immediately and ask a doctor, pharmacist or registered salesperson with this outer box.**

Related area	Symptom
Skin	Rash/redness, itching, swelling, pain, dermatitis, tingling pain, feeling hot, feeling dry

**3. If symptoms do not improve after using for 5 to 6 days, stop use and ask a doctor, pharmacist or registered salesperson with this outer box.**

### Ingredients/contents (per 100g of ointment)

Ingredients/contents
Indomethacin 1.0g
Arnica tincture 1.0mL (0.2g as Arnica)
Capsicum extract 0.4g (5.0g as capsicum)

[Inactive ingredients] *l*-menthol, (Partially hydrolyzed) polyvinyl alcohol, methyl acrylate and 2-ethylhexyl acrylate copolymer, polyoxyethylene nonylphenyl ether, partially neutralized polyacrylate, carmellose sodium, sorbitan oleate, glycerin, D-sorbitol, sodium hydrogen sulfite, disodium edetate, dihydroxyaluminum aminoacetate, lactic acid, macrogol, diisopropyl adipate

(Continued overleaf)

## Indications

Shoulder pain associated with stiffness, low back pain, arthritic pain, muscle pain, tenosynovitis (hand/wrist pain), elbow pain (tennis elbow, etc.), contusion, sprain

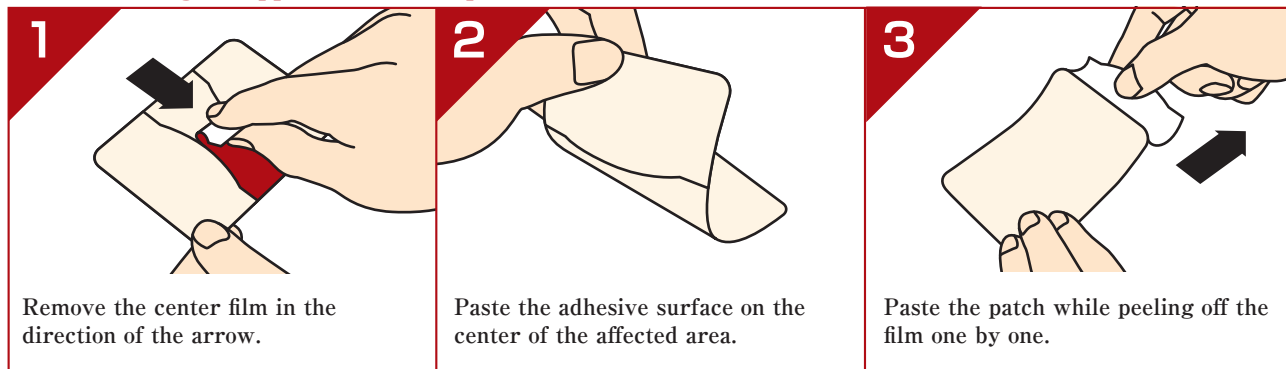
## Dosage/directions

Remove the plastic film and apply it on affected areas up to twice a day.

### <Precautions for dosage/directions>

- (1) Follow the dosage/directions.
- (2) Use only when having a symptom such as pain or swelling, etc. This medicine is only intended to treat the symptoms above. It does not cure the original disease that may cause pain or swelling, etc.
- (3) If the affected area gets wet due to sweat etc., wipe well before use.
- (4) When the medicine is used for contusion, sprain, etc., use after the symptoms on the affected area, such as feeling hot, subside.
- (5) After using this medicine, there may be a feeling of irritation when becoming sweaty.
- (6) Pay attention not to touch the mucosa, such as the eyes, nasal cavity and lips with hands after using this medicine.
- (7) After application of this medicine, do not warm the affected area with a kotatsu (Japanese foot warmer) or electric blanket.
- (8) Irritation may occur, when taking a bath while this medicine is applied or immediately after the medicine is peeled off. Peel off the medicine more than one hour before taking a bath. Also, use this medicine about 30 minutes after taking a bath.
- (9) If you are a person with sensitive skin, it is recommended to test before use by applying a small square piece (1-cm to 2-cm) on a spot of sensitive skin on the inside of the arm for more than half a day as a rough standard and confirm that any symptoms such as rash/redness, itching, swelling or dermatitis is not observed.

### How to make good application of the patch



## Precautions for storage and handling

- (1) Store in a cool and dry place avoiding high temperatures, humidity and direct sunlight, with the medicine bag sealed.
- (2) Keep out of reach of children.
- (3) Do not transfer the product to another container.  
(It may cause misuse and deterioration in the quality. )
- (4) To maintain the quality, keep the unused medicine in the medicine bag and store with the opening part tightly sealed by the fastener.
- (5) Do not use this product after its validity date (printed on the outer box and on the medicine bag) has expired.

Marketing Authorization Holder Kowa Company, Ltd. 3-4-14, Nihonbashi-Honcho, Chuo-ku, Tokyo